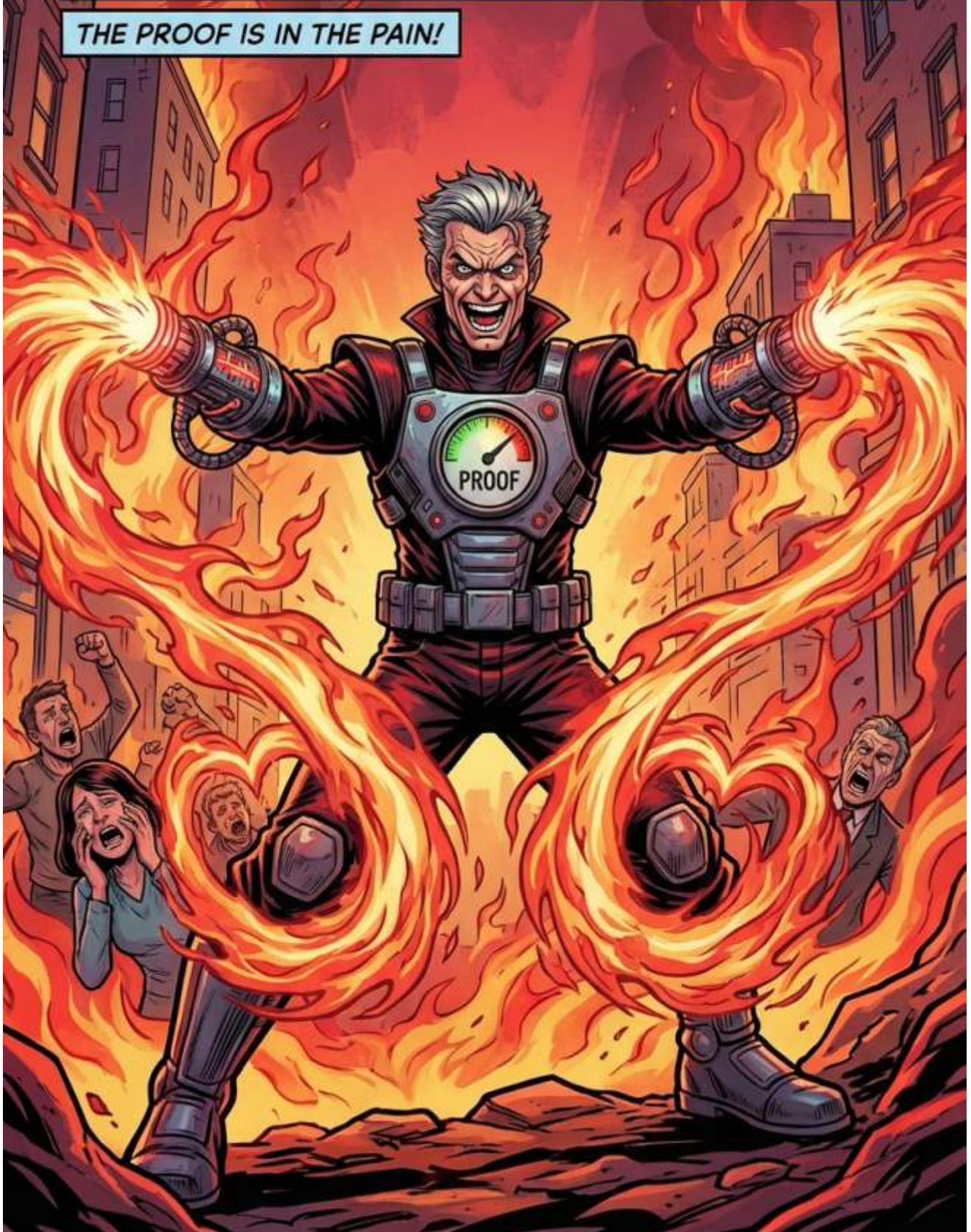


VILLAIN PROFILE:

ISSUE #8

THE PROOFMASTER

THE PROOF IS IN THE PAIN!



TTB Field Office, Chicago. Three days ago.



Exterior view of the village of Long Grove, Illinois.





THE PROOFING







SUBJECT T





DOC'S DIAGNOSIS

SPIRIT WATER BREWERY,
LONG GROVE, IL.



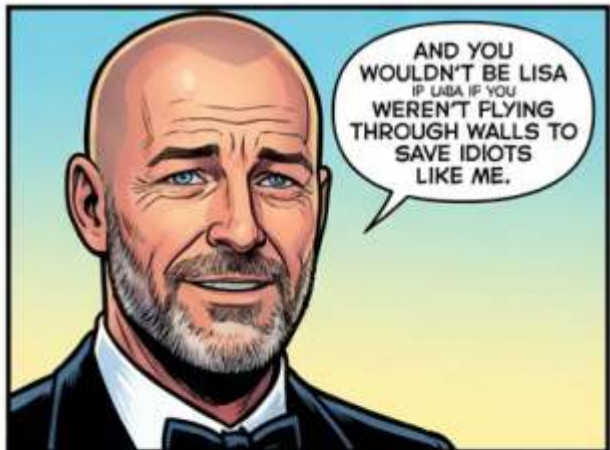
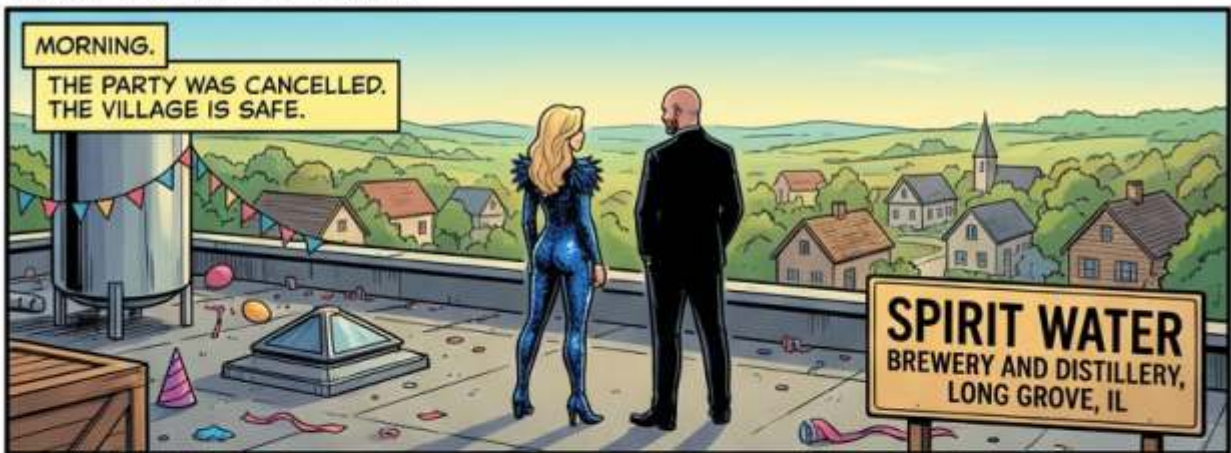


THE COMEDOWN

LONG GROVE, IL. MORNING.
THE PARTY WAS CANCELLED.
THE VILLAGE IS SAFE.



THE COMEDOWN





THE SHADOW ISN'T ONE PERSON. IT'S A **BOARD**. THEY TEST WEAPONS IN SMALL TOWNS. LONG GROVE WAS CHOSEN BECAUSE OF THE SPIRIT ENERGY. BECAUSE OF **YOU**, GUARDIAN.



WHY?

BECAUSE YOU'RE THE **STRONGEST**. IF THEIR WEAPONS WORK ON YOU...



PROOFMASTER FAILED. BUT WE LEARNED. HER LOVE IS A VULNERABILITY AND A STRENGTH. UNPREDICTABLE. **FASCINATING**.

THE BUNG THIEF IS READY. A DIFFERENT APPROACH. STEAL WHAT THEY LOVE, NOT AMPLIFY IT.

CAACKLIN!



APPROVED. AND PREPARE THE FINAL TEST. THE ONE WE'VE BEEN BREWING FOR DECADES.



SUBJECT ZERO.
PRESUMED DECEASED.
LOCATION: LONG GROVE, IL.



THE
FUTURE IS
COLD.

FROST-BYTE!





These Long Grove records... they go back further than I thought.



?!

SYNDICATE PAYROLL - 1920s

FOUNDING FAMILIES

- CHERRY BLANES
 - JONENIE BRIDMAN
 - DEYSIT HORNEES
 - BARGLUNK FAMILIES
 - MARRY FORM
 - MAYOFF GERRSON
 - ANJUAL SKUIR
 - RENIT BURKHS
 - LRONY CORP
- GADK AMBORLIS
 - CMA BROELE
 - BUUSE P. PYROONE
 - EARTY INADE
 - SYSAN SHERGE
 - DAVIS SA CALIHS
 - RAVEN SPA



The connection is undeniable. Long Grove's foundation is built on Syndicate lies.